



**Flotech**

**For Instrumentation and Control**

you are our success partners



**For Instrumentation and Control**

Flotech for Instrumentation and Control Company is specialized in providing smart and innovative solutions in the fields of water and wastewater measurement and control.

With excellent products, solutions and services, we support our customers in making their processes safe, reliable, efficient and environmentally friendly.

Our engineers and technicians work to ensure the accuracy and quality of our Solutions, devised with a smart approach. Furthermore, our team is committed to ensuring that the Solutions are designed harmoniously and collimated in the organization of the Customer as a homogeneous system focused on the goals to be achieved.

**Here is a list of our common products and solutions: -**

**1- Flow Measurement**

Electromagnetic Flowmeter - Ultrasonic Clamp-on Flowmeter - Vortex flowmeter- Open channel Flowmeter and others for liquids.

**2- Level Measurement**

(Ultrasonic - Hydrostatic - Radar) Level Meter - Level Electrodes - Float and others.

**3- Pressure Measurement**

Smart Pressure Transmitter - Pressure Sensor - Pressure Switch and Pressure Gauges.

**4- Water Analyzer**

Ph - ORP - Conductivity - Turbidity - Dissolved Oxygen - Residual Chlorine and others for liquids.

**5- Dosing Systems**

Dosing Pumps Using Control System

**6- SCADA System**

Monitoring and Remote Control - Dataloggers and Others.

**7- Automatic Valves**

**8- Our Services**

Installation - commissioning & Startup - Calibration - Technical Survey and Reports -Maintenance - Training.



[www.sonic-driver.com](http://www.sonic-driver.com)



[www.enelsan.com](http://www.enelsan.com)

**Sonic Driver Ltd design and manufacture ultrasonic clamp-on flow metering products**

● **Model : Fixed - UFM**

- Pipe outer diameters from 10 to 6500 mm
- Flow velocity range 0.01 to 25 m/s.
- Resolution 0.25 mm/s.
- Repeatability 0.15 % of measured value.
- Accuracy +/- 0.5% of measured value
- Operational temperature from -10 to +65 degC
- Standard 16MB internal data-logger
- Standard RS232 and USB serial communications
- Turn down ratio 1/100.
- Protection Class IP 65
- Measurement rate 1 Hz as standard.
- Gas/solids < 10 % of volume.
- Measurement: Flow velocity, Volumetric flow, Mass Flow, Energy flow
- Up to 6 optional plug in IO modules including :
  - Active/Passive current Output 0/4 to 20 mA.
  - Active/Passive current Input 0/4 to 20 mA.
  - Open Collector pulse.
  - Opto Relay pulse.
  - Relay (NO and NC) output.
  - PT100 input (4 wire).
  - Modbus RTU.



[www.sonic-driver.com](http://www.sonic-driver.com)

● **Model : Pocket Plus - UFM**

- Flow/energy/wall thickness pocket multi-meter.
- Pipe outer diameters from 10 to 6500 mm
- Flow velocity range 0.01 to 25 m/s.
- Resolution 0.25 mm/s.
- Repeatability 0.15 % of measured value.
- Accuracy +/- 0.5% of measured value
- Operational temperature from -10 to +65 degC
- 4MB datalogger
- Serial communications via USB
- Ranging from 10 to 6500 mm
- Turn down ratio 1/100.
- Protection Class IP 65
- Measurement rate 1 Hz as standard.
- Battery life up to 24 hours continuous use on a standard 9V PP3 battery for easy replacement





### Compact Inline Electromagnetic flowmeter

Accuracy :  $\pm 0,5\%$   
 Electrical Conductivity For water  $20 \mu\text{S}$ ,  
 for other liquids  $5\mu\text{S}$   
 Environment Temp.  $-20$  to  $70 \text{ }^\circ\text{C}$   
 Connection Flange (DN10-DN2200)  
 Electrodes St. St. standard optional other  
 Protection Class IP 67  
 Inner HARD RUBBER, PTFE  
 Output 4-20 mA/Pulse/Frequency,  
 Status Output,MODBUS-RTU,RS485



### Remote Inline Electromagnetic flowmeter

Accuracy :  $\pm 0,5\%$   
 Electrical Conductivity For water  $20 \mu\text{S}$ ,  
 for other liquids  $5\mu\text{S}$   
 Environment Temp.  $-20$  to  $70 \text{ }^\circ\text{C}$   
 Connection Flange (DN10-DN2200)  
 Electrodes St. St. standard optional other  
 Protection Class IP 68, IP67  
 Inner HARD RUBBER, PTFE  
 Output 4-20 mA/Pulse/Frequency,  
 Status Output,MODBUS-RTU,RS485



### OXD Inline Electromagnetic flowmeter

not required straight distance for installation  
 Accuracy :  $\pm 0,5\%$   
 Electrical Conductivity For water  $20 \mu\text{S}$ ,  
 for other liquids  $5\mu\text{S}$   
 Environment Temp.  $-20$  to  $70 \text{ }^\circ\text{C}$   
 Connection Flange (DN10-DN2200)  
 Electrodes St. St. standard optional other  
 Protection Class IP 68, IP67  
 Inner HARD RUBBER, PTFE  
 Output 4-20 mA/Pulse/Frequency,  
 Status Output,MODBUS-RTU,RS485



### Immersion Type electromagnetic Flowmeter

Accuracy:  $\pm 0,5\%$   
 Process Conductivity:  $20 \text{ microSiemens/cm}$   
 Process Temp: Teflon(PTFE)  $-20 \text{ c} \dots +150 \text{ c}$   
 Pipe Sizes: DN200...DN1000(standerd Probe)  
 DN1000...DN2000(Extended Probe)  
 Measuring Range :  $0,3 \dots 10\text{m/s}$   
 Process Pressure:PN16  
 Power supply:85-265 VAC 50-60 HZ , 24VDC,Battery Operated  
 Output: Pulse ,Frequency, RS485 MOUDBUS  
 Indicator: 3 Line 30 digital With 4Push buttons LCD



### VORTEX FLOWMETER

Measuring Fluid : liquid, gas, steam  
 Connection : DN15 – DN300  
 Temperature :  $-40^\circ\text{C}$  /  $260^\circ\text{C}$  Ops. $350^\circ\text{C}$   
 Accuracy :  $\%1$   
 Pressure : 40 bar max.  
 Output : Indicator + 4-20 mA + Ops. RS485  
 Body Material : SS304  
 With pressure and temperature  
 compensation



### Remote Vortex Flowmeter

Measuring Fluid: Liquid , gas , steam  
 Connection : DN15 – DN300  
 Temperature :  $-40$ : 250 Ops. $350 \text{ c}$   
 Accuracy:  $1\%$   
 Pressure: 40 bar max  
 Output: Indicator+ 4-20 mA Ops. RS485  
 Body Martial: SS304  
 With Pressure and temperature compensation



### Inline Ultrasonic flowmeter

EUFF-2000SW  
 Accuracy :  $\pm 0,5\%$   
 Environment Temp.  $-20$  to  $70 \text{ }^\circ\text{C}$   
 Connection Flange (DN15-DN6000)  
 Protection Class IP 68,IP67  
 Output 4-20 mA/Pulse/Frequency,  
 Status Output,MODBUS-RTU,RS485



### Ultrasonic clamp on flowmeter

ETRANS-UD  
 Accuracy :  $\pm 1\%$   
 Environment Temp.  $-20$  to  $70 \text{ }^\circ\text{C}$   
 Connection clamp on (DN15-DN6000)  
 Protection Class IP 68 , IP67  
 Output 4-20 mA/Pulse/Frequency,  
 Status Output,MODBUS-RTU,RS485



### Open Channel Flowmeter

Temp: $-20 \text{ c} \dots +50 \text{ c}$   
 Power supply: 24 VDC  
 Data Recording: USB  
 Analogue Input Signal: 2 Places 4-20mA  
 Analogue Output Signal: 2 Places 4-20mA  
 Digital Output: Pluses (Opt.)



### Turbine Flowmeter

Model : LWGY-...  
 Fluid : Liquid  
 Pressure : 63 Bar Max  
 Body : 316L, Turbine: 304SS  
 Output : pulse , 4-20 mA  
 Pressure Loss: Max 0.05 Mpa  
 Sensitivity: 0.5%  
 Temperature : -20°C ... 120°C  
 Protection : IP65



### Turbine Flowmeter with Indicator

Model: LWGY  
 Fluid: Liquid  
 Pressure: 63 bar Max  
 Sensitivity: 0.5%  
 Output: Pulse , 4-20 mA  
 Temp: -20 c...120 c  
 Protection: IP65



### HYDROSTATIC LEVEL

Model: ETRANS-HL  
 Diaphragm: Stainless 316L  
 Usage Area: Liquids  
 Temperature: 0-70 °C  
 Accuracy: ± 0,3% of full scale  
 Protection Class: IP 68  
 Supply: 10-36Vdc Loop Supply  
 Output: 4-20mA  
 Body: Stainless Steel (316)



Diaphragm: Stainless 316L  
 Usage area: Liquids  
 Temperature measure range: -20...+85 c  
 Temperature measure accuracy: 0.1%  
 Pressure measure accuracy:  
 0-120 mH2O(12bar, Opt. 400mH2O)  
 Pressure measure accuracy: 0.05%  
 Conductivity measure range:  
 0-10 mS/cm or 0-200 mS/cm  
 Conductivity measure accuracy: 2%



### Radar level transmitter

Fuild: Liquid & Solids  
 Temperature: -40...120 °c  
 Output: 4-20 mA Hart  
 Range: 0.1....50m  
 Accuracy / Beam angel : +2 mm/8°  
 Power supply: 220VAC-24VDC  
 Protection class: IP67



### Ultrasonic LEVEL

Model: ETRANS-HL  
 Accuracy: ± 0,2% of full scale  
 Protection Class: IP 68, IP65  
 Supply: 10-36Vdc Loop  
 Output: 4-20mA  
 Temperature: 0-70 °C



### Capacitive Level Transmitter

Measurable Material : Liquid and Solid  
 Max Pressure :100 bar  
 Max. 150°C  
 Supply: 12...24VDC  
 Output: 4-20 mA, 0-10V  
 Accuracy : ± 0,5%  
 Length :as request



### Finger type pressure transmitter

Model Etrans. P01  
 Protection Class IP 65  
 Accuracy : ± 0,2%  
 Sensor Diaphragm  
 Measuring Range -1 ...2000 bar  
 Output 4-20 mA, 0-10 V  
 Temperature op. : -40 -135 ° C  
 Voltage 10-36 VDC  
 Process Connection as request



### Pressure transmitter with display

Model Etrans. P02  
 Protection Class IP 65  
 Accuracy : ± 0,2%  
 Sensor Diaphragm  
 Measuring Range -1 ...2000 bar  
 Output 4-20 mA, 0-10 V  
 Temperature op. : -40 -135 ° C  
 Voltage 10-36 VDC  
 Process Connection as request



### Pressure transmitter with display

Model Etrans. P08  
Protection Class IP 67  
Accuracy :  $\pm 0,2\%$   
Sensor Diaphragm  
Measuring Range -1 ...2000 bar  
Output 4-20 mA, 0-10 V  
Temperature op. : -40 -135 ° C  
Voltage 10-36 VDC - Connection as request



### Differential pressure transmitter

Model Etrans. P08  
Protection Class IP 67,IP68 EX  
Accuracy :  $\pm 0,2\%$   
Measuring Range -1 ...160 bar  
Output 4-20 mA, 0-10 V  
Temperature op. : -40 -135 ° C  
Voltage 10-36 VDC  
Connection as request



### Finger Differential pressure transmitter

Model Etrans. DP01  
Protection Class IP 65  
Accuracy :  $\pm 0,2\%$   
Measuring Range -1 ...40 bar  
Output 4-20 mA, 0-10 V  
Temperature op. : -40 -135 ° C  
Voltage 10-36 VDC  
Connection as request



### Stainless pressure transmitter

Model Etrans. P04  
Protection Class IP 67,op IP68  
Accuracy :  $\pm 0,2\%$   
Sensor Diaphragm  
Measuring Range -1 ...2000 bar  
Output 4-20 mA, 0-10 V  
Temperature op. : -40 -135 ° C  
Voltage 10-36 VDC  
Process Connection as request



### GSM Datalogger

Working principle:  
GSM/GPRS (Connected sensors)  
Input: 2xTemperature+Humidity  
sensor ,2x4-20mA, 0-10 v Logic, RS485  
MOUSBUS Output: GSM/GPRS, RS485  
MOUSBUS, 4xSPDT Relay(250 V, 5A)  
Temperature: 0...85°C  
Accuracy:  $\pm 0.05\%$  F.S  
Housing material: ABS  
Display: 2x16 LCD display 7button  
Internal Storage: 100.000 data



### Paperless Recorder

Working principle:  
Datalogger (Connected sensors)  
Input: 4-40 Channel( Universal)  
( mA, V, Frequency, PT100 Thermocouple, Pulse)  
Output: 1-4x SPD Relay (250 V, 2A),  
USB 2.0, RS485 MOUSBUS  
Temperature: 0...50°C  
Accuracy:  $\pm 0.02\%$  F.S  
Housing material: ABS  
Display: 3,5" ...19,4" TFT LCD Resolution 640x480  
Internal Storage: 64 Mega Bytes



### RTD Temperature Transmitter

Protection Class IP68  
Measuring Range -50 - 600 bar  
Output 4-20 mA  
Voltage 10-36 VDC  
Length probe : as request  
Process Connection as request



### RTD Temperature Transmitter with display

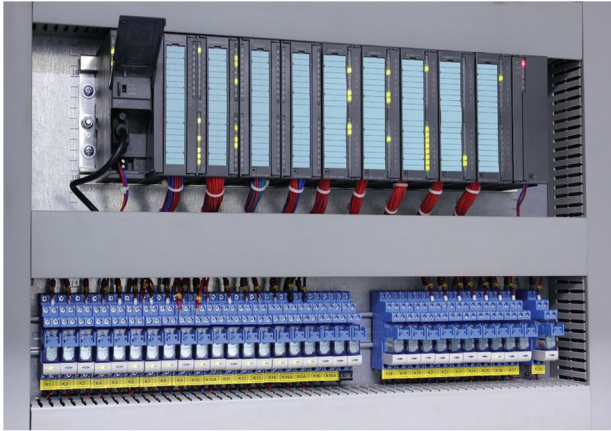
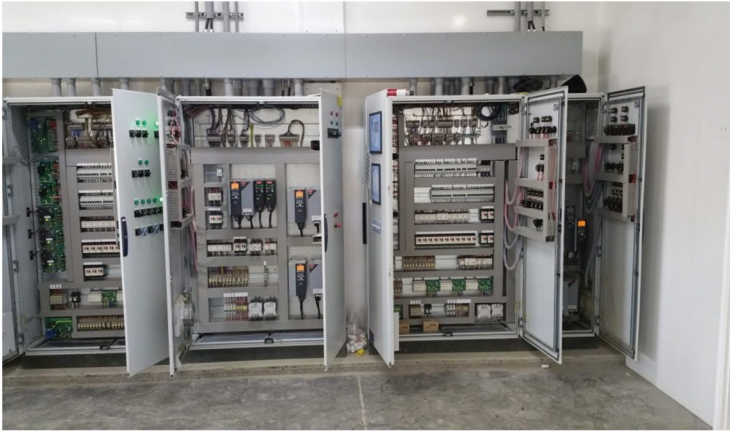
Protection Class IP68  
Measuring Range -50 - 600 bar  
Output 4-20 mA  
Voltage 10-36 VDC  
Length probe : as request  
Process Connection as request



### Temperature Transmitters and Thermowells

Temperature Transmitter Version:  
Head Type, DIN Rail Type  
Power supply: 12...36 VDC  
Input: Resistance thermometer, Thermocouple  
Output: 4-20 mA / RS485 MOUSBUS,  
0-10 V( Only with Rail Type)  
Protection class:  
IP65(Head Type), IP54 (Rail Type)  
Process Connection:  
Thread clamp, DIN/ANSI Flange  
Material: 1.4301 (304) Stainless steel,  
1.4404(316) Stainless steel

# Scada System and Control Panel



**SIEMENS**

*Ingenuity for life*

**Schneider**  
Electric

## Pneumatically Actuated Valves



Butterfly Valves



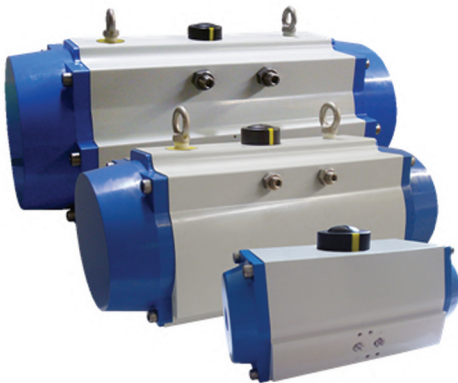
3 Piece ball valve  
female thread



3 Piece ball valve  
welding end



2 Piece ball valve  
female thread



Pneumatic Actuators



3 Ways Ball Valve



Flanged Ball Valve

## Electrically Actuated Valves



3 part ball valve  
with welding ends



Ball Valve



Butterfly Valves



Flanged Ball Valve



# KOSA PLUS

www.kosaplus.com

## Electric Actuator



**Plastic intermediate cap**

Even after long period of usage and exposure to sunlight, the letters are clear and visible.



**Dome type indicator**

The open & close status of the valve can be checked even from a long distance through the external position indicator.

**Captive bolt**

Prevents the bolt from being lost even when the cover is open for wiring.

**Terminal Box**

Easy & safe wiring is possible by opening the terminal box only. There is no need to disassemble the entire actuator body. (Except for KE002)



## Smart E-P Positioners POSITIONERS



www.seg.co.kr



Smart Positioner

Electro-Pneumatic  
Positioner

Lock-up Valve &  
Volume Booster

# Our Installation Pictures



our success partner



you are our  
success partners

Contact us

10th of Ramadan Branch



Masriya Center 2 - Entrance A - 2 floor,  
Office No. 3 - Ordonia - 10th of Ramadan



01011150819 - 01155110222



0554455044



sales@flotechmc.com

October Branch



216B-Mall Ali Eldin-6th of October



01155110222 - 01155110333



sales@flotechmc.com



[www.flotechmc.com](http://www.flotechmc.com)